

OFFICE / FLEX SPACE FOR LEASE

1,900± SF LOCATED AT DESERT FAIRWAYS IN NORTH SCOTTSDALE

8763 E BELL ROAD | SUITE C102 | SCOTTSDALE, ARIZONA

C-2 ZONING



101

E Bell Rd

8763

FEATURES

Location: SWC of E Bell Rd / Loop 101
Available Space: ±1,900 sf
Year Constructed: 2004
Parking Ratio: 5/1,000

**IMMEDIATE
AVAILABILITY!**



John Quatrini
Associate Broker
C 602 859 0506

john@shellcommercial.com



Suzanne Enright
Senior Associate
C 602 471 2981

suzanne@shellcommercial.com

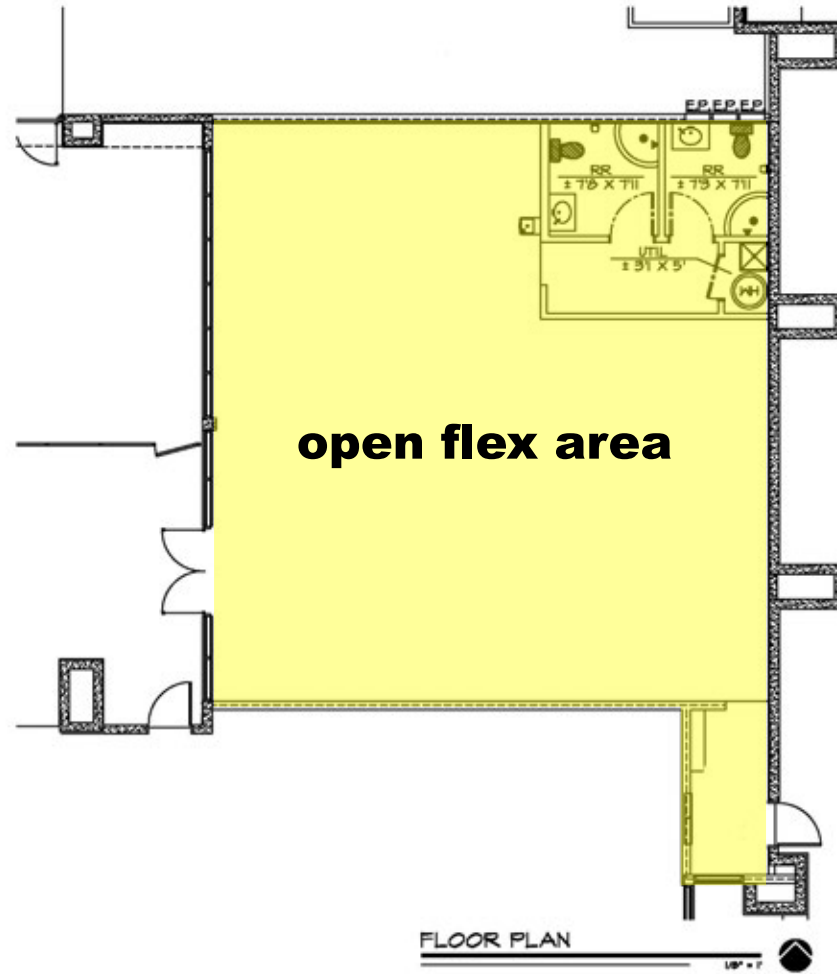
shellcommercial.com



FLOOR PLAN

8763 E BELL ROAD | SCOTTSDALE, ARIZONA 85260

C102



NOT TO SCALE

All information furnished regarding property for sale, rental or financing is from sources deemed reliable, but no warranty or representation is made to the accuracy thereof and same is submitted to errors, omissions, change of price, rental or other conditions, prior to sale, lease or financing or withdrawal without notice. No liability of any kind is to be imposed on the broker herein. This information has been secured from sources deemed reliable, however, we make no warranties as to its accuracy.

SITE PLAN

8763 E BELL ROAD | SCOTTSDALE, ARIZONA 85260



NOT TO SCALE

All information furnished regarding property for sale, rental or financing is from sources deemed reliable, but no warranty or representation is made to the accuracy thereof and same is submitted to errors, omissions, change of price, rental or other conditions, prior to sale, lease or financing or withdrawal without notice. No liability of any kind is to be imposed on the broker herein. This information has been secured from sources deemed reliable, however, we make no warranties as to its accuracy.

NORTH SCOTTSDALE

DESERT FAIRWAYS



The above is subject to prior sales and leasing. This information has been secured from sources we believe to be reliable, but we make no representation or warranties, expressed or implied as to the accuracy of this information.

